

opTex-Fabrics geometry

Software for the weaving product development

Product description

opTex –Fabrics geometry-an application of the **opTex-Group**-complements and extends the functionality of **WeaveStruct** and is designed for tasks such as product development in weaving. It aims particularly to meet the needs that exist at the design of technical Fabrics.

opTex-Fabrics geometry can be used as a standalone program, with input, however, many parameters have calculated. As an additional program to **WeaveStruct** it has the significant advantage that the already available data will to be fed automatically, so this add-on can be started simultaneously with them. Important functions can to be used only by calling on **WeaveStruct**.

While **WeaveStruct** is oriented focus on the surface structure, **opTex- Fabrics geometry** aims at the height of the structure to be developed fabric.

The application processing such structural properties, which provides the fabric surface. Warp and weft binding heads raising depending on design specifications from more or less of the Fabrics surface, can in certain areas high light undesirable or desire able and help promote the mechanical stress or affect. Can this purpose, the "**Spread Value**" responsible, resulting from the construction and adjustment of the fabric is as well as influenced by tensile forces in the preparation. It is visualized, for example, as the warp and weft threads to be interwoven and can simulates the effects that changes in tensile forces during weaving and further processing. The problem of shift sensitivity is taken.

A special section is also the inter dependence of the two directions given of weaving-in.

In this application allows the "Relative weave density" to determine a single-surface fabric very quickly.

The flexibility of the yarns used requires special attention and canto be as defined and edited in **WeaveStruct**.

WeaveStruct and **opTex – Fabrics geometry** to be configured matched against each other. This purpose, a special tool more.

System requirements

opTex-Fabrics geometry was a 32-bit programming for the (IBM compatible) PC created and runs under Windows XP, Vista and 7. The application is installed as a single user.

Theprogramis designed forascreenresolution of1280 x 1024or above.An adaptationfrom ahighresolutionisrecommended. Thecolordepthto 32bit(true color) set.

What is needed istoinstallaCD-ROM driveas wellasamousepointing device.

Subject to change

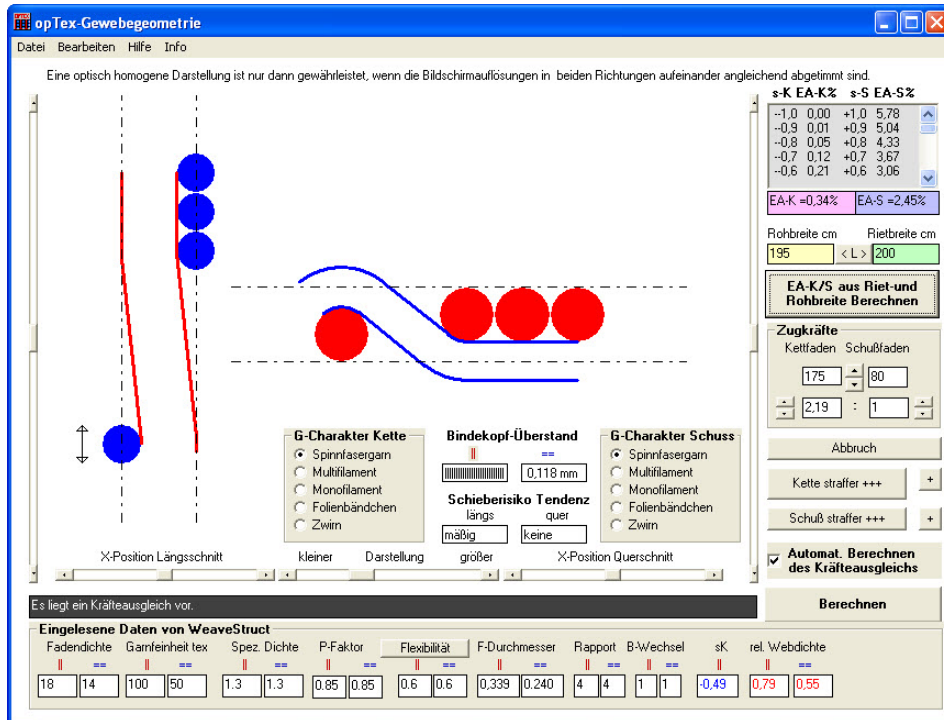


Abbildung 1: **opTex-Fabrics geometrie**
Processing of weaving-in, tension force,
binding head projections, sliding behavior

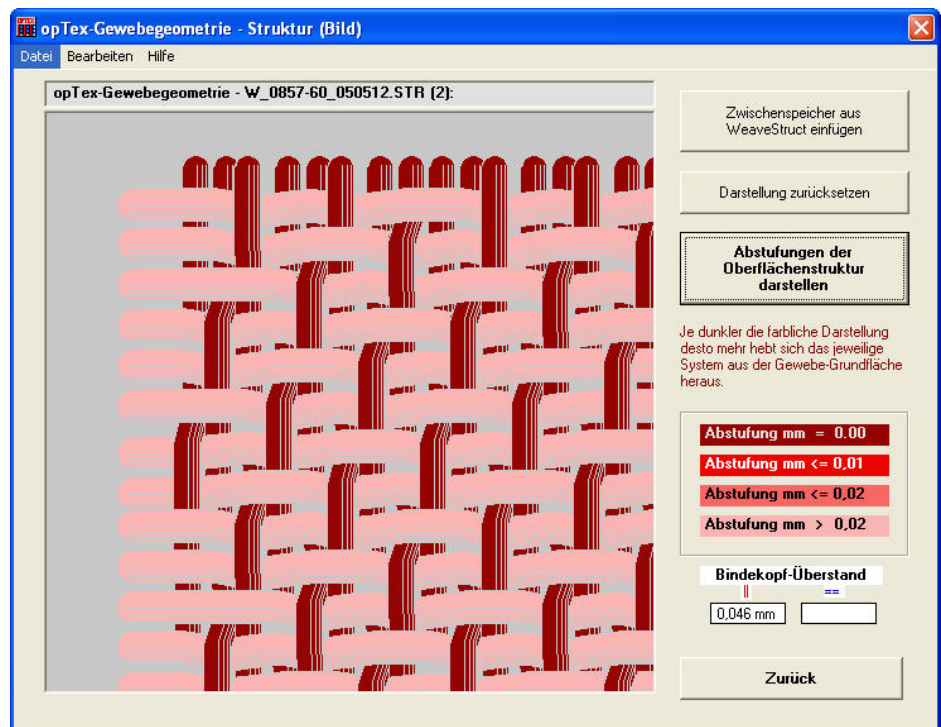


Abbildung 2: **opTex-Fabric geometrie**
Visual representation and processing of the surface structure

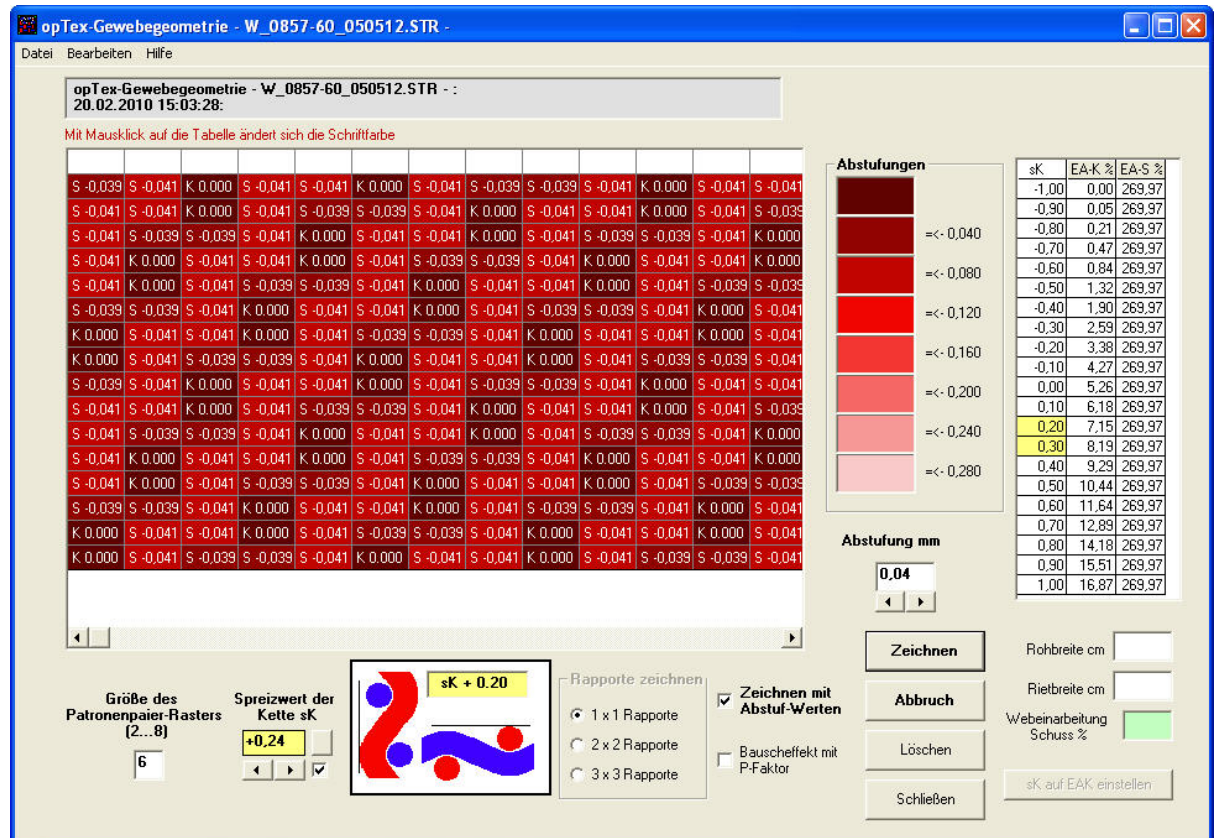


Abbildung 3: *opTex-Fabrics geometrie*
Optical and digital representation of the surface structure

Development - Copyright

Prof. Martin Kienbaum

Nürnberger Str. 34

D-95448 Bayreuth

Tel. +49 921/50705955

Fax +49 921/50705956

www.Kienbaum-Webereitechnik.de

www.Kienbaum-Gewebebindungen

Sales - Distribution

CH-Consulting

Breslauer Str. 6

D-95497 Goldkronach

Tel. +49 9273 574 913

Mob +49 176 24 969 867

www.weavestruct.de

E-Mail: weavestruct@gmail.com

Regional Agent 大中華區域代理:



A&A Consultant 香港 A&A 諮詢



: www.hkaac.net

@: info@hkaac.net

☎: +852-9023 4800

📮: PO Box 143, Tung Chung, HONG KONG (香港)